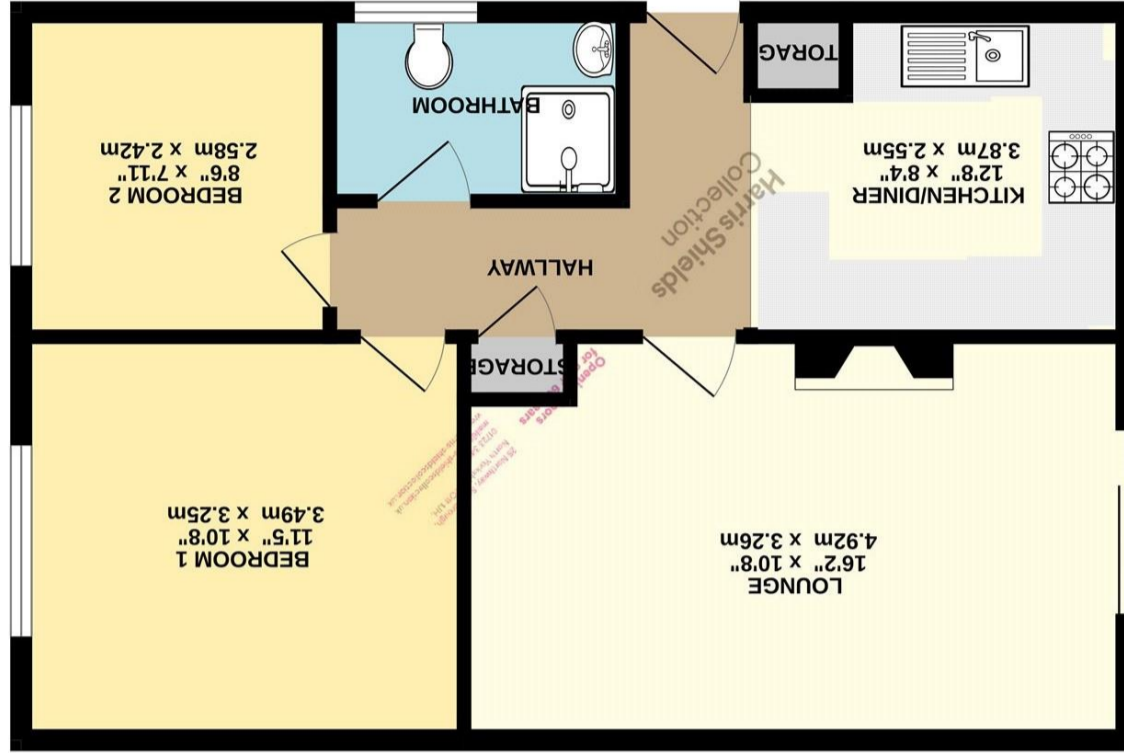




TOTAL FLOOR AREA: 576 sq.ft. (53.5 sq.m.) approx.
 Whilst every attempt has been made to ensure the accuracy of the floorplan contained here, measurements of doors, windows, rooms and any other items are approximate and no responsibility is taken for any error or mis-statement. This plan is for illustrative purposes only and should be used as such by any prospective purchaser. The services, systems and appliances shown have not been tested and no guarantee as to their operability or efficacy can be given.
 Made with Mapbox ©2024



GROUND FLOOR
 576 sq.ft. (53.5 sq.m.) approx.



17 Coverdale Drive, Scarborough, North Yorkshire,
 YO12 5TP

Harris Shields
 Collection

Detached two bedroom Bungalow

- ✓ Two Bedrooms
- ✓ Detached Bungalow
- ✓ No Onward Chain
- ✓ Garage & Driveway
- ✓ Rear Enclosed Garden
- ✓ Council Tax Band B

Offers in the region of £215,000

Harris Shields Collection

Harris Shields Collection, 25 Northway, Scarborough
North Yorkshire, YO11 1JH

01723 341557

mail@harris-shieldscollection.uk

<https://harris-shieldscollection.uk/>

Description

Harris Shields Collection are delighted to bring to the market this detached bungalow found in excellent order throughout.

The property is formally situated within the Woodlands ward of Scarborough and is in close proximity of Scarborough Hospital.

The well proportioned property comprises entrance hall leading to open plan kitchen diner and lounge with patio doors leading to the rear garden.

There are two double bedrooms and a family bathroom suite (no bath). Outside benefits from a lawned garden with some decking and patio area for seating.

Off street parking with driveway and garage included. The garage comes equipped with electric and water also. Offered to the market with no onward chain. Council tax band B.

Additional Information

Council tax band B



Opening doors
for over 60 years

Harris Shields
Collection